



# Learning Generation Initiative

## Strategy

January 2024



# Our origins: The Education Commission

- **The Education Commission** was co-convened in 2015 by the Prime Minister of Norway, the Presidents of Malawi, Indonesia, and Chile and the Director-General of UNESCO
- It launched the **Learning Generation Report** in 2016 laying out a pathway to transform education systems so that all children can be in school and learning within a generation
- Since then, the Commission has been implementing recommendations through a focus on critical **transformations**
- The Commission closed on 30th June 2023 and its agenda, team and programs is being taken forward by the **Learning Generation Initiative at EDC**

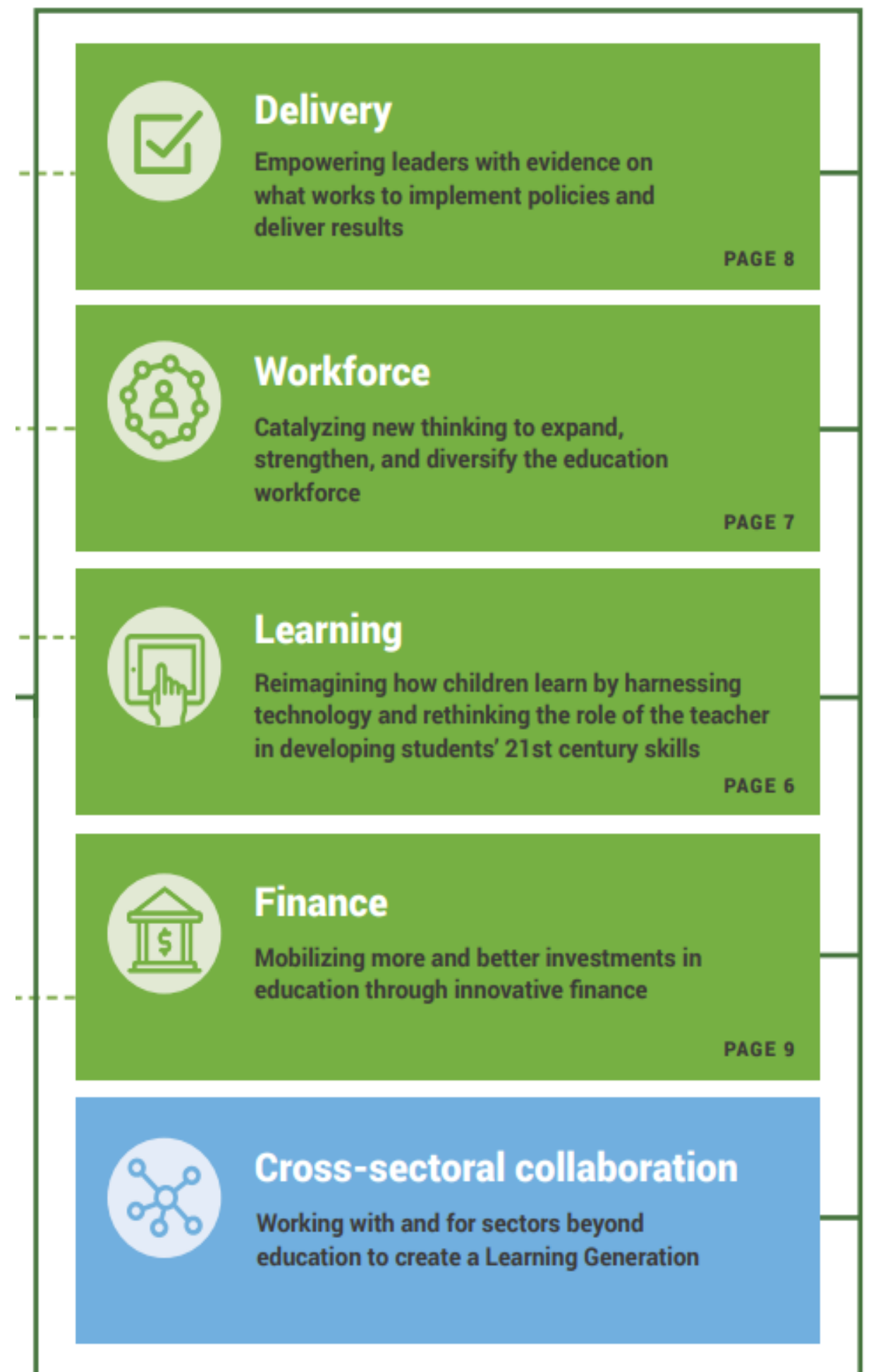
## Our Chair and the Learning Generation Report



## Our Commissioners



## Recommendations implemented through 5 key transformations





# Impact

## Education Workforce Initiative (EWI) launched

G20 Eminent Persons Group recommends



### 2018

## SAVE OUR FUTURE

600+ partners 160 countries

Campaign

Save Our Future White Paper

DeliverEd Global Mapping

High Touch High Tech (HTHT) Initiative launched

GIS for Education Working Group launched

### 2020

DeliverEd research in **Ghana, Jordan, Pakistan, Sierra Leone & Tanzania**



Launched Rewiring Education for People and Planet report at the Transforming Education Summit



Sustainable Financing Initiative for School Health and Nutrition (SFI) launched

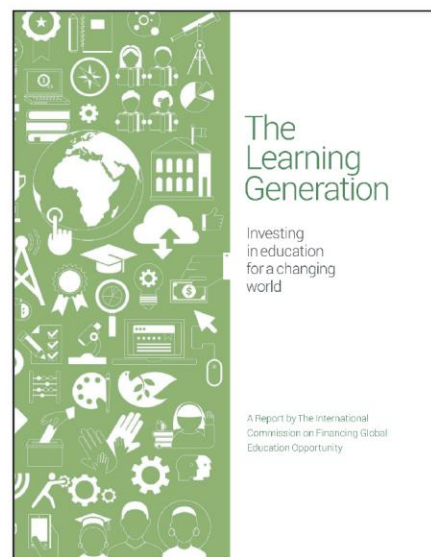


EWI in **Sierra Leone & Ghana, Kenya and Rwanda**

### 2022

# THE COMMISSION'S IMPACT 2016-2023 AT A GLANCE

### 2016

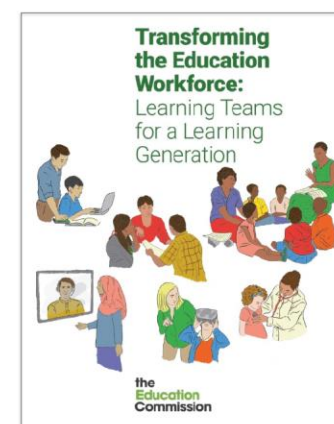


The Learning Generation Report endorsed by UNSG

300+ partners in 105 countries held consultations

50+ background papers produced

### 2019



Transforming the Education Workforce report launched

In Vietnam a HTHT prototype increased students math scores by the equivalent of

2 years learning gain in 1 semester

Global Education Forum (GEF) established

### 2021

EWI in **Rwanda and Sierra Leone**

HTHT 2021 Summit 150+ international speakers 90k+ views

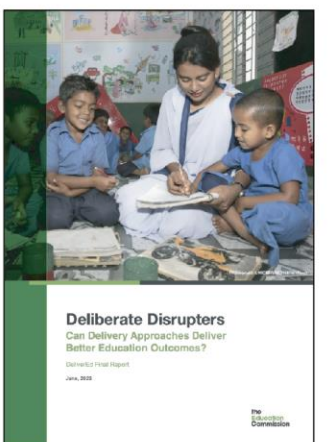
DeliverEd African Policymaker Forum



DeliverEd Global Mapping of Delivery Approaches

### 2023

DeliverEd Final Report



Strategic partner of the What Works Hub

IFFED operational in Switzerland

Transition from the Education Commission to the Learning Generation Initiative at EDC





## LGI within EDC

**EDC's** international work spans basic education, higher education, youth and workforce development, psychosocial and mental health, adolescent health and sexuality education. It has worked on large scale implementation as well as system strengthening across the education, youth and health sectors in 80 countries and 50 US states.

**LGI** complements **EDC's** international work, particularly in enhancing and expanding **EDC's** work in advocacy and policy engagement, systems level research and synthesis, school meals financing and new geographies.





**Critical challenges still need to be addressed to achieve SDG 4**



UN Photo/Tobin Jones

**70%**  
**of 10-year-olds in low- and middle-income countries *can't read or understand a simple text***

**Over half (68%) of the world's youth aren't on track to learn basic secondary level skills by 2030.**

**15 million** additional teachers are needed at the primary and secondary level in sub-Saharan Africa but this won't be enough, teachers need professional development and support to be effective

In 14 countries in Africa, only **22% students** had a female school leader

**80%** of children in low-income countries do not have access to school meals and are too hungry to learn

**Service delivery is lagging** despite ambitious government reform agendas



# The Learning Generation Initiative's Vision and Mission

**Vision:** *All* children and youth are in school and learning the skills they need to be successful in work and life

**Mission:** To empower the people within and connected to education systems to enable *all* children to be learning within a generation





# Our 3 Transformation Areas

We will work with governments and others to:

- Strengthen and create a more collaborative **education workforce**
- Invest more in **school health and nutrition**
- Improve **system delivery**

We will do this with a strong focus on addressing **marginalization**, building **system resilience** and facilitating **cross- sectoral collaboration**

## Education Workforce

- Learning teams
- School and system leadership
- Supply and quality of teaching in the hardest to reach areas

## System Delivery

- Use of evidence and data
- Problem-solving practices

## School Health and Nutrition

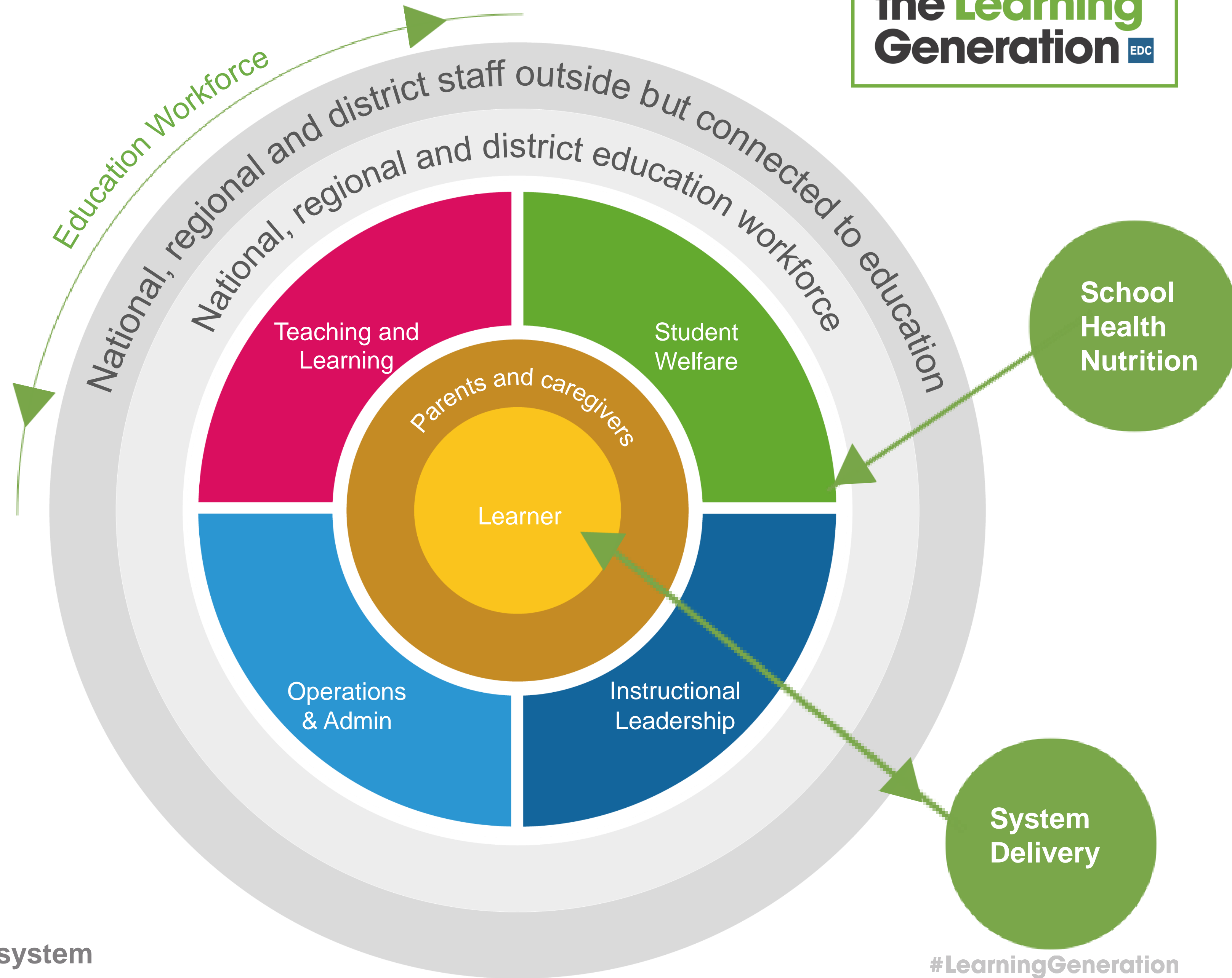
- School meals financing - domestic, international and innovative financing
- Explore potential to expand to school health and nutrition

Marginalization  
System resilience  
Cross-sectoral collaboration

# Our Conceptual Framework

The learning teams approach links these transformation areas together:

- the learner is at the center...
- supported by an effective education workforce collaborating within and across levels...
- and with other sectors to ensure the learner is ready and able to learn...
- enabled by a resilient education system focused on delivery.



= the school ecosystem



# Our Approach

Our approach is to work with partners to undertake research, policy engagement, co-design and testing, and to influence collaborative action at all levels

## Analyze

With policy makers, national researchers and other end users

- Conduct pragmatic research and analysis
- Synthesize evidence in easily accessible formats
- Create knowledge products and tools

## Act

With govts and national partners

- Hold policy dialogues
- Develop country specific options to address specific issues
- Co-design, test, and evaluate innovative solutions
- Develop designs or action plans and link them to opportunities for implementation and scale

## Amplify

With champions and others in the sector

- Raise the profile of key issues and evidence-based solutions
- Engage in global fora with key decision-makers
- Collaborate on evidence-orientated education events
- Convene actors on specific issues



# Our Guiding Principles

We are guided by the following principles that are embedded in all that we do



**Child-centred and  
inclusive**



**Work in partnership  
with a collaborative  
and open approach**



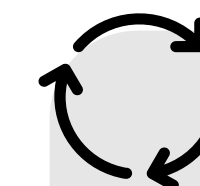
**Locally rooted and  
globally connected**



**Informed by rigorous  
data and evidence, but  
action-oriented**



**Politically  
independent, but  
cognizant of political  
economy**



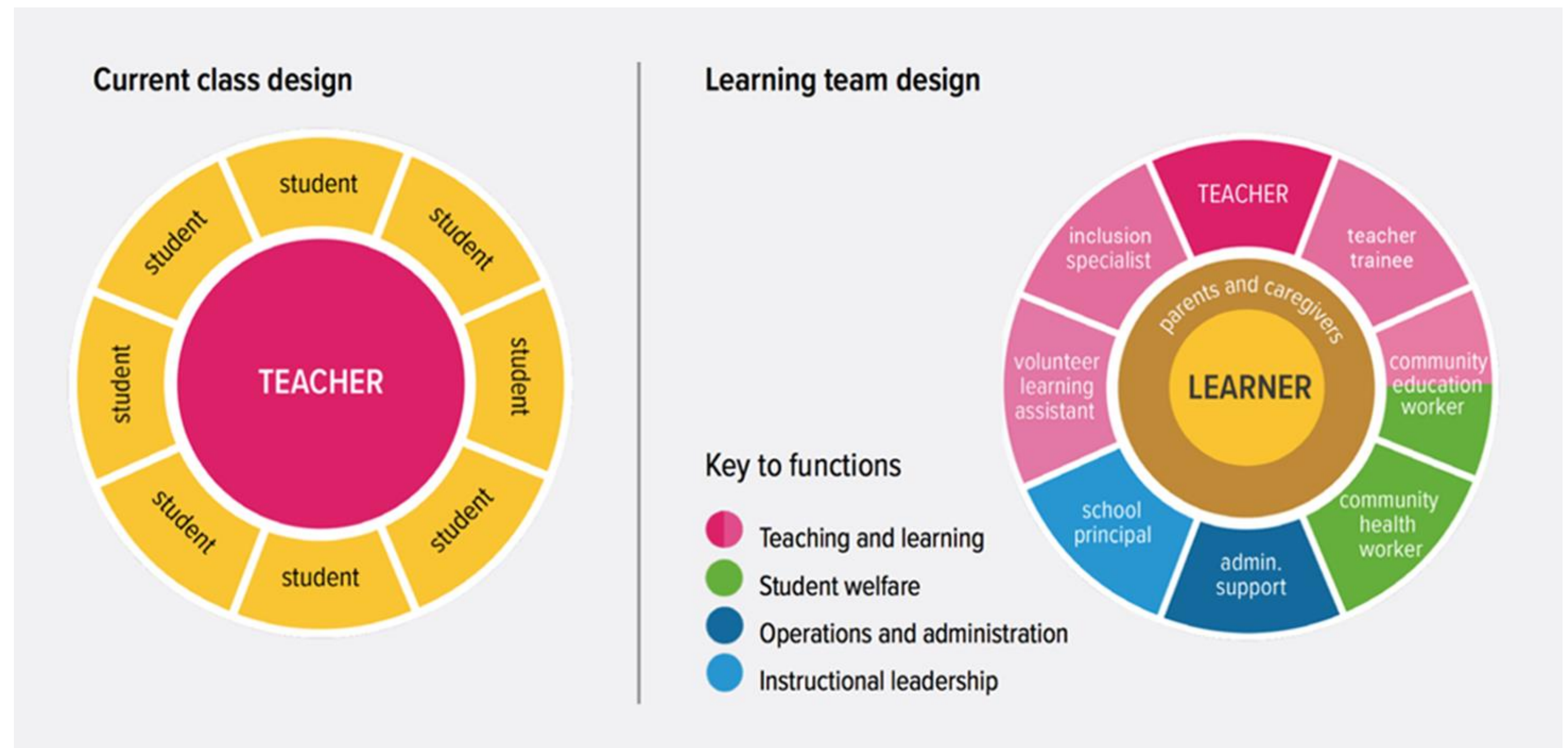
**System sustainability**



**Goal:** The education workforce is designed, strengthened and empowered to collaborate with each other and those outside the education system to achieve learning for all.

**Our objectives by 2027:**  
work with countries to

- Advance the use of learning teams approaches
- Strengthen school and system leadership
- Improve the supply and quality of teaching for the most marginalized



The learning team approach is not a single design, it's about harnessing people within communities, schools and systems to support the learner to learn. [#LearningGeneration](#)



## Examples of our current and planned work



### ANALYZE

> Undertake multi-country research agenda on learning teams with Open University

> Undertake multi-country research agenda on the middle-tier with UNESCO IIEP

> Extend research on equitable teacher allocation from Sierra Leone to other countries

### ACT

> Ghana: continue our role as research and learning partner with the Ghana Education Service Workforce Initiative and research partner for Leaders in Teaching initiative

> Sierra Leone: support the implementation of school leader policy guidelines and school leader development program

> Sierra Leone: support the Sierra Leone SC to improve deployment, alternative pathways to teaching

> Work with new countries to test system-embedded learning team approaches for foundational learning

> Work with new countries to improve school and system leadership (with particular focus on women, inclusion and foundational learning)

> Ghana, Rwanda, Kenya: support the implementation of innovative pedagogy action plans

> Increase uptake of High Touch High Tech approach

### AMPLIFY

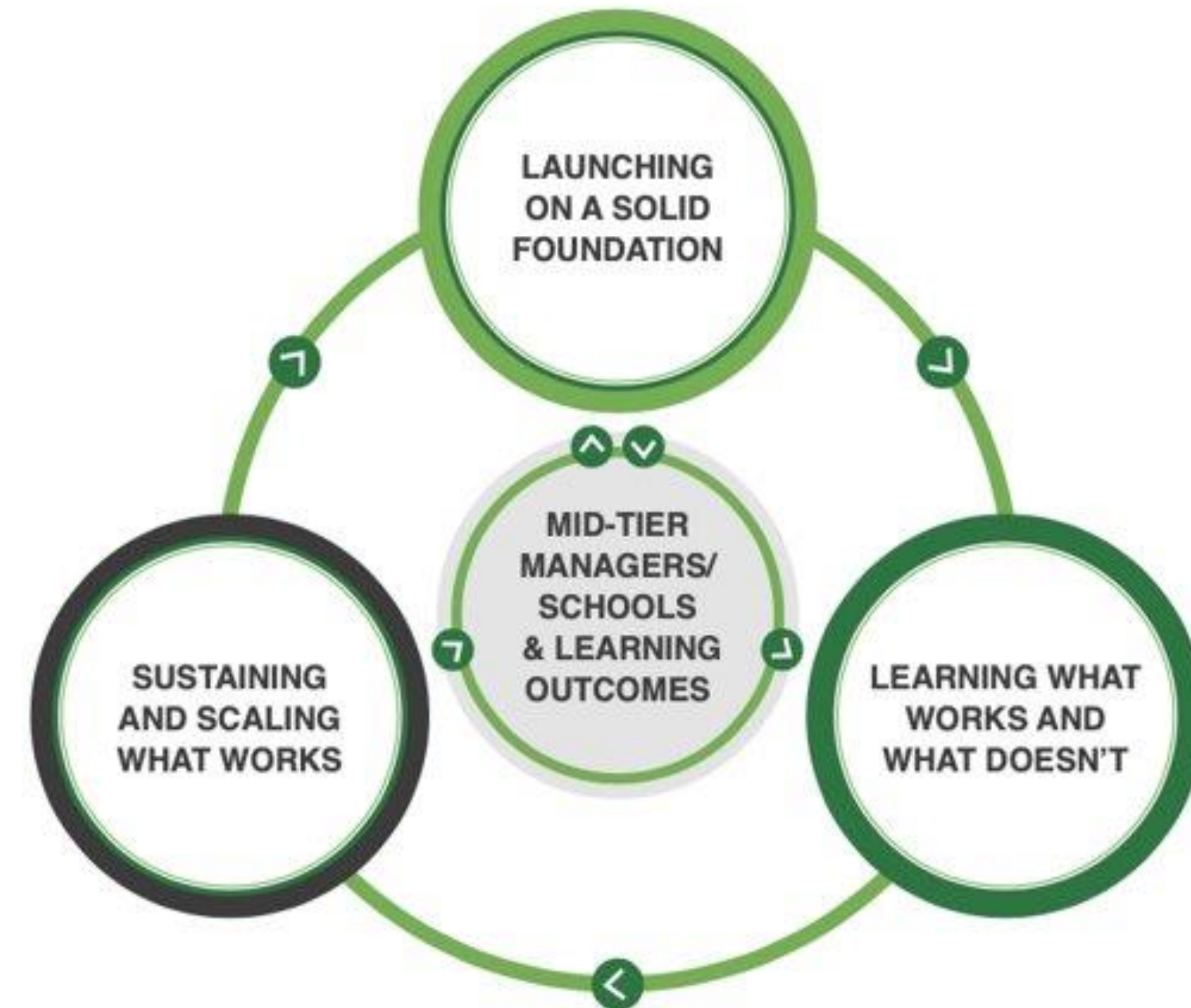
> Work with our champions and partners to raise the profile of the education workforce, share evidence, undertake political engagement, influence global forums and publications and build a peer learning network



**Goal:** Education systems improve delivery through better prioritization, use of data, and problem solving to achieve learning for all.

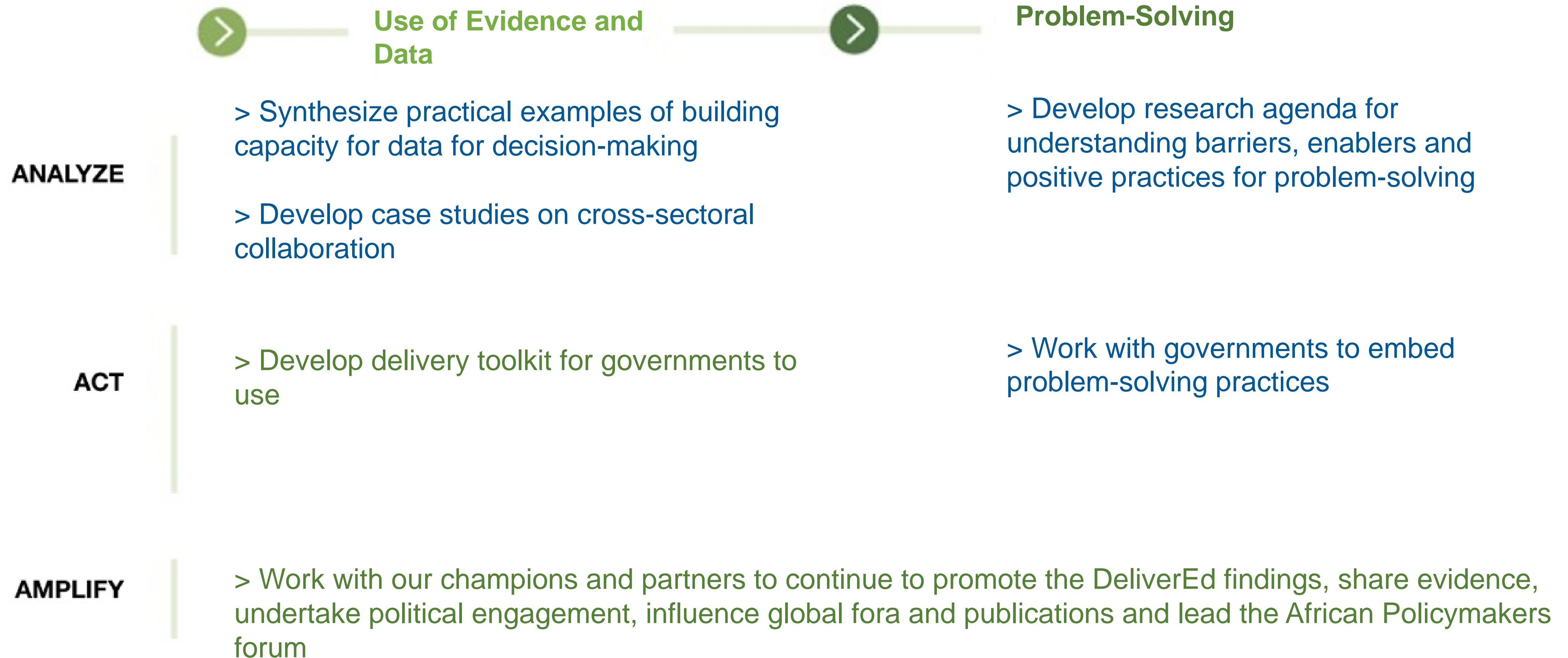
**Our objectives by 2027:** work with countries to

- Use evidence and data to prioritize, problem-solve, and improve organizational learning at all levels of the education system
- Embed problem-solving practices throughout the delivery chain





## Examples of our **current** and **planned** work





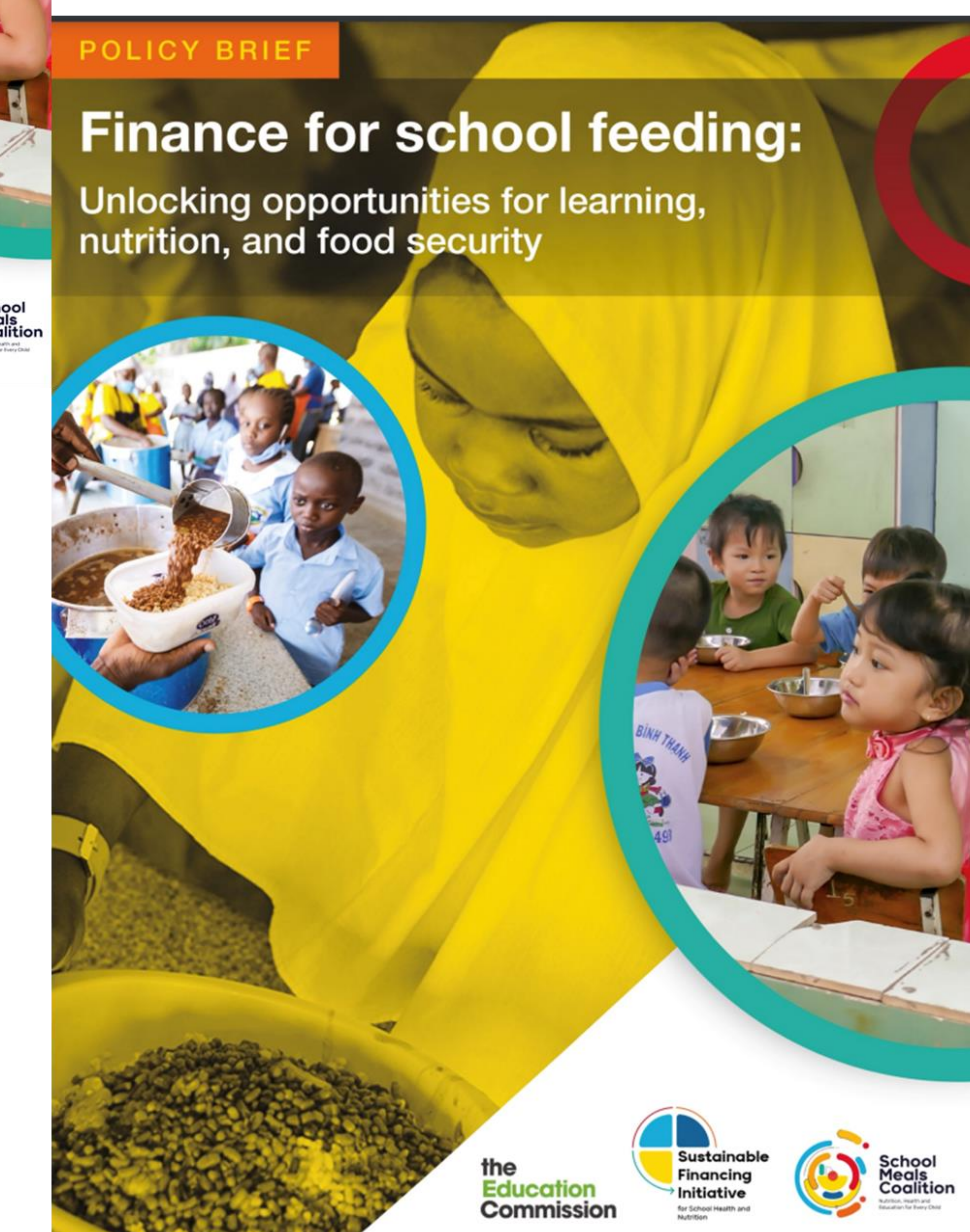
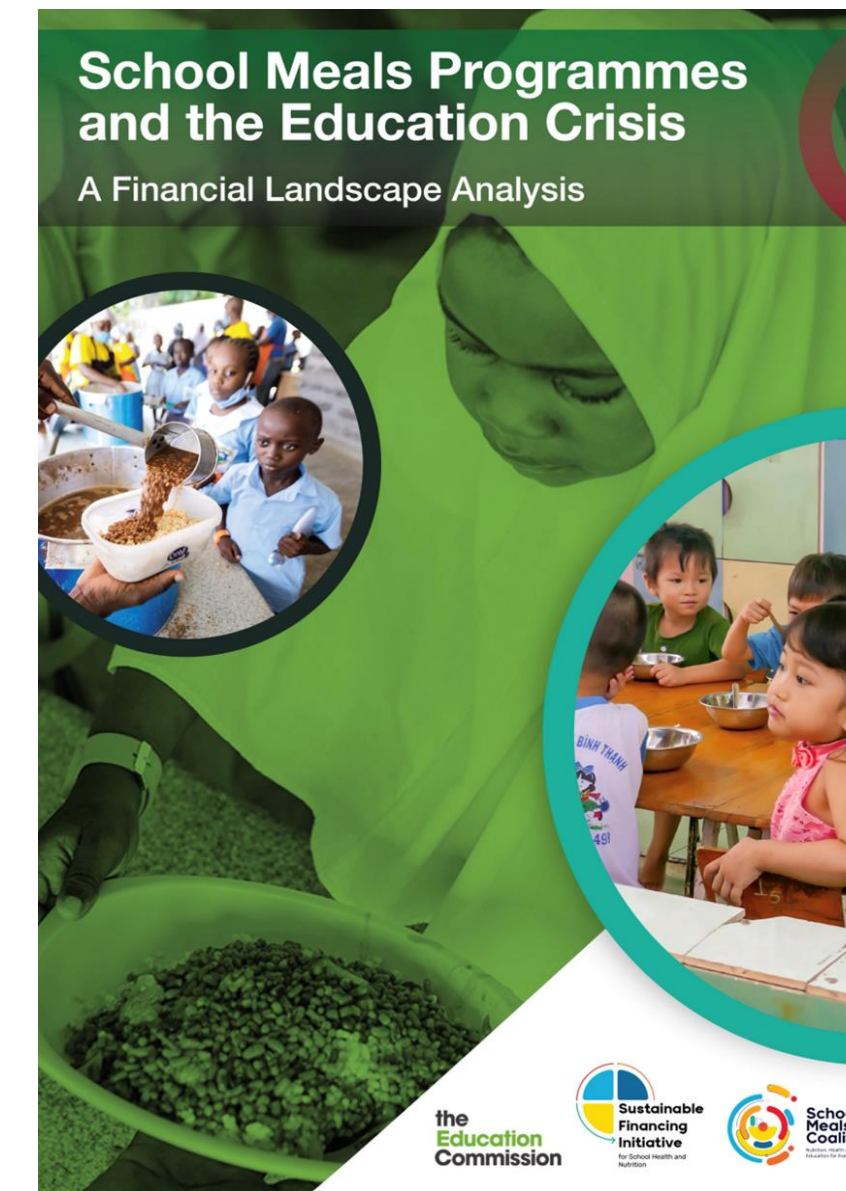
# School Health and Nutrition

the Learning  
Generation EDC

**Goal:** Governments prioritize investments in school health and nutrition to advance equitable access to education and learning for all

**Our objectives by 2027:** work with countries to

- Mobilize innovative, domestic, and donor financing for school feeding
- Promote the cross-sectoral value of school meals beyond financing





## Examples of our current and planned work





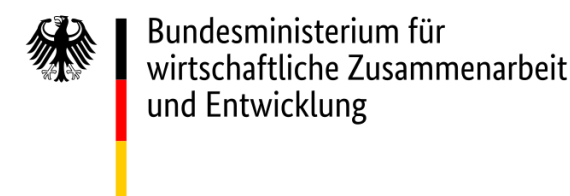
# Partnerships

Partnerships are absolutely critical to our work, we are looking to expand our partnerships, especially with those in the global South, some of our current partners:

**the Learning Generation** EDC

**EDC** Education Development Center

Now that we're hosted by EDC, we have a unique opportunity to learn from, draw on and contribute to EDC's rich technical and implementation experience



# Champions

We are delighted to be able to continue to work with some of our former Commissioners and create a new group of LGI champions who will advocate for our transformation areas



# Key contacts



Amy Bellinger,  
Director of Programs  
Learning Generation Initiative  
Abellinger@edc.org



Deborah Kimathi,  
Education  
Workforce Lead  
Dkimathi@edc.org



Neelofar Javaid,  
Systems Delivery  
Advisor  
Njavaid@edc.org



Katherine Kullman,  
School Health & Nutrition  
Project Manager  
Kkullman@edc.org

To learn more, please visit <https://www.edc.org/learning-generation-initiative>